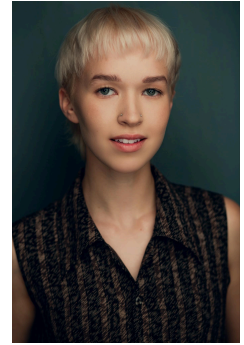


Eli Douglas

elidouglas81@gmail.com

63 Burbank St. Apt 12
Boston, MA 02115
(440) 752-0143



Passionate and dedicated Theatre Director with a BFA in Musical Theatre and emphasis in Directing from The Boston Conservatory. After debuting their first production while earning their degree, Eli became a trailblazer for student directors at The Boston Conservatory by solidifying a five thousand dollar grant from the institution to grant one student director each semester to jumpstart their directorial career. Highlights of their directorial journey include their gender-queer adaptation of *The Vagina Monologues* while in conversation with V (previously known as Eve Ensler) on how to include Trans voices and search beyond the binary, *Curious Incident* with prioritizing a diverse cast and creative team of autistic and neurodivergent individuals, and collaborating with new and upcoming playwrights such as David Valdes and Ken Green through workshops and The Boston Theater Marathon. They are currently located in Boston, MA but are open to relocation.

Directorial Experience

Apples, The Universe, And A Little Something For Later	Director	Boston Theater Marathon
The Curious Incident Of The Dog in the Night-Time	Director	The Boston Conservatory
The Vagina Monologues	Director/Producer	The Boston Conservatory
American Siren (A New Musical)	Director	The Boston Conservatory
Toothy's Treasures	A.D.	The Boston Conservatory
Much Undone	A.D.	Samuel Lancaster Prod.

Education

BFA in Musical Theatre/Directing Emphasis

The Boston Conservatory (Magna Cum Laude)

High School Graduate

North Royalton High School

References

Christopher Webb	cwebb@berklee.edu	(303) 949-6875	Directing Emph. Professor
Angie Jepson	ajepson2@berklee.edu		Directing Emph. Professor
Ryan Mardesich	rnardesich@gmail.com	+1 (408) 781-2586	Director